



April 4, 2021

USED EQUIPMENT



Biglerville, PA
800-345-3546

Bellevue, OH/Peru, IN
800-848-8460

Sikeston, MO
573-475-9496



SPRAYERS



\$75,000

2012 John Deere 4730, 6057 hours, John Deere 9.0L diesel 245 hp engine, 4WD, hydrostatic trans., 165 in. wheel base, 800 gal. poly tank, 90 ft booms, 20 in. nozzle spacing, 5-section shutoff valve, 3-way nozzles, 120 gal. rinse tank with 3 in. side fill, JD Greenstar 2600 and StarFire iTC compatible, 60 in. crop clearance, A/C, heat, AM/FM radio, air ride seat, fenders, Michelin 380/90R46 tires (60% remains).

SN: (OH) **U1471**



\$180,000

2015 AGCO RoGator 1300B, 1367 hours, AGCO Power T4 8.4L 370 hp diesel engine, 1300 gal. SS tank, 120 ft booms with SS boom lines, 20 in. nozzle spacing, 7-section shutoff valve, Raven Viper Pro, Phoenix 300 guidance, parallel swathing, foam marker, A/C, AM/FM radio, air ride seat, fenders, 380/90R46 tires (50% remains). Motivated seller.

SN: AGCA1300LFNSL1015 (Dansville, NY) **BROKERED**



\$285,000

2019 AGCO RoGator RG1100C, 824 hours, AGCO turbo diesel engine, 4-speed hydrostatic auto. trans., AGCO adjustable axles, 4WS, 1100 gal. SS tank, 100 ft booms, 20 in. nozzle spacing, Raven Viper 4, AutoSteer, A/C, AM/FM radio, air ride seat, 380/90R46 tires, front (50% remains) rear (45% remains).

SN: AGCA1100AKNNL1103 (PA) **No. U1453**



\$30,000

2008 International DT 7400, 69,400 miles, MaxxForce 300 hp diesel engine, Eaton Fuller 10-speed trans., 1400 gal. SS tank, 55 ft booms with SS boom lines, 60 in. nozzle spacing, 3-section shutoff valve, single body nozzles, Raven, SS chemical eductor, foam marker, A/C, AM/FM radio, air ride seat, fenders, includes front 385/65R Bridgestone (40% remains) and rear 700/50 Alliance tires (40% remains).

SN: 1HTWDAARX8J041245 (Cranbury, NJ)



\$35,000

2008 International Workstar, 45,922 miles, Maxxforce diesel engine, Allison auto. trans., 850 gal. SS tank, 50 ft booms with SS boom lines, 15 in. nozzle spacing, 5 body nozzles, SCS 460, foam marker, Goodyear tires (60% remains).

Tank SN: SR-08850TK1002 (Chatham, VA) **BROKERED**



\$6,000

2015 Ag-Chem AirMax 180, 60 ft booms, electric roll tarp, Raven control nodes. Removed from a 2015 1300B Rogator, came off of unit in working condition. (PA) **No. U1436A**



\$115,000

2014 AGCO RG1300 RoGator, 1892 hours, AGCO 8.4L 330 hp turbo diesel engine, 4WS, painted 409 SS New Leader L4000G4, Raven Viper Pro, Phoenix 300 GPS, parallel swathing, air ride seat, A/C, beacon lights, fenders, electric roll tarp, Michelin 380/90R46 tires (front 45%, rear 35% remains).

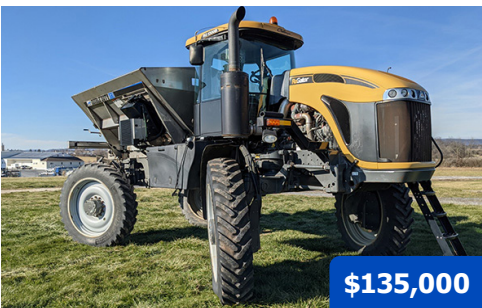
SN: AGCA1300VENS1017 (OH) **No. U1450**



\$125,000

2015 AGCO RG1300B RoGator, 2191 hours, AGCO diesel turbo engine, 4-speed hydrostatic auto. trans., AGCO adjustable axles, 4WS, painted 409SS New Leader L4000G4 spreader body, Raven Viper Pro, AutoSteer, A/C, AM/FM radio, air ride seat, 380/90R46 tires, front (50% remains) rear (45% remains). New roller, bearings, and straight belt.

SN: AGCA1300PFNS1093 (MO) **No. U1452**



\$135,000

2015 AGCO RG1300B RoGator, 2155 hours, AGCO diesel turbo engine, 4-speed hydrostatic auto. trans., AGCO adjustable axles, 4WS, **NEW! GVM Double Duty SR1 9.5-ton 304SS 300 ft³ spreader with a Raven Viper 4 and 700S GPS newly installed**, AutoSteer, A/C, AM/FM radio, air ride seat, 380/90R46 tires, front (50% remains) rear (45% remains). Frame sandblasted and painted by GVM September 2020. (PA) **No. U1436**

On Rent until May 2021



\$210,000

2018 AGCO Rogator RG1300C, 1780 hours, AGCO turbo diesel engine, 4-speed hydrostatic auto. trans., AGCO adjustable axles, 4WS, New Leader 304 SS 11T L4258G4 spreader body with Multiplier, Raven Viper 4, RGL 600 lightbar, A/C, AM/FM radio, air ride seat, Agri-Cover electric roll tarp, rear camera, fenders, 380/90R46 row crop tires.

SN: AGCA1300PJNS1037 (MO) **No. U1467**



\$70,000

2015 AGCO TG7300 TerraGator, 2100 hours, AGCO 330 hp diesel engine, CVT auto. trans., painted 409 SS New Leader L4000G4 14 ft spreader, Viper Pro, AgCommand controller, Slingshot ready, A/C, premium leather air ride seat, 1000/50R25NHS front tire, 1000/50R25 rear tires (70% remains). Engine rebuilt 6/18 by AGCO under warranty, has 500 hours on it.

SN: AGCA7300LFNS1005 (MO) **No. U1379**



\$24,500

2012 GVM 8.0T Transpread, 304 SS, 8-ton capacity, 3-speed gearbox, ground driven, dual spinners, electronic spinner RPM gauge, Shur-Lok roll tarp, 380/90R46 tires. Includes set of 650/75R32 floater tires. Perfect for lime, fertilizer, and cover crop application.

SN: TR-19PS8.01162 (PA) **U1466**



\$30,000

2017 GVM 11.0T Double Duty FR Spreader, painted 409 SS with 304 SS cross members and mounts, 13 ft x 102 in. wide, 330 ft³ capacity, rear camera, 3-ton 95 ft³ 5 ft x 102 In. wide capacity Fusion Insert, bin level sensor, Raven CAN Nodes, Fusion Cable-Lok roll tarp with SS bows.

SN: 614580 (PA)



\$55,000

2010 GVM 9275 Prowler, 5300 hours, Cummins QSB 6.7L 275 hp diesel engine, Funk DF250 10-speed powershift trans., 304 SS GVM Double Duty 9.5-ton spreader, Raven Viper Pro, AutoSteer, A/C, AM/FM radio, air ride seat, 380/90R46 tires (30% remains).

SN: RC-101149T1203 (OH) **No. U1464**



\$80,000

2011 GVM 9275 Prowler, 4332 hours, Cummins QSB6.7L 275 hp diesel engine, Funk DF250 10-speed powershift trans., 304 SS New Leader L3220G4 multi bin spreader, Raven Viper Pro, A/C, AM/FM radio, air ride seat, front fenders, Row Crop tires (80% remains). Runs smoothly, very clean, garage kept.

SN: RC-111149T1234 (Remington, VA) **BROKERED**



\$60,000

2012 GVM 9275 Prowler, 3250 hours, Cummins QSB6.7L 275 hp diesel engine, Funk DF250 10-speed powershift trans., 304 SS GVM Double Duty 9.5-ton Fusion Ready spreader, A/C, AM/FM radio, air ride seat, front fenders, Goodyear 380/90R46 Row Crop tires (30% remains). Runs smoothly, very clean, farmer owned.

SN: RC-121149T1236 (Charleston, MO) **BROKERED**



\$65,000

2013 GVM 9275 Prowler, 3926 hours, Cummins QSB6.7L 275 hp diesel engine, Funk DF250 10-speed powershift trans., GVM Double Duty 9.5-ton spreader, Raven Viper Pro, A/C, AM/FM radio, air ride seat, Goodyear 380/90R46 tires (30% remains), includes set of 650 floater tires (30% remains).

SN: RC-131149T1270 (Friendship, TN) **BROKERED**

**\$50,000**

2011 GVM E350 Prowler, 6200 hours, mechanically friendly, Cummins Tier 4 8.9L 350 hp diesel engine, automatic Funk DF250 trans., 11-ton 304 SS GVM Double Duty Fusion Ready body, Raven Viper Pro, AutoSteer, RGL 600 lightbar, AM/FM, A/C, air ride seat, 710/70R42 Goodyear floater tires, set of 380/105R50 row crops included.

SN: CS-11114XI1006 (OH)

**\$135,000**

2015 GVM E325 Prowler, 2700 hours, Cummins QSL9 325 hp diesel engine, 1010 ft-lb torque, auto. ZF WG 210 6-speed powershift trans., 120 in. axles, variable coil spring suspension, 409 SS painted GVM Double Duty 11 ton spreader, Viper Pro, parallel swathing, A/C, AM/FM radio, air ride seat, 380/75R50 tires. Rebuilt engine by Cummins in August 2018. **Frame sandblasted and painted in February 2019.**

SN: CS-15325XI1034 (PA) **No. U1358**

On Rent til June 2021

**\$185,000**

2017.5 GVM E330AA Prowler, 2268 hours, Cummins QSL8.9 330 hp turbo diesel engine, Funk DF250 powershift 11-speed trans., Dromos adjustable axles rated for 30,000 lb. 108-120 in., 304 SS New Leader L4000G4 11 ton spreader, Raven Viper 4+, SmarTrax, RGL 600 Light Bar, air ride seat, A/C, AM/FM radio, 380/90R46 Michelin tires (60% remains), includes set of floater tires. Includes remainder of 5-year engine/trans./axle warranty, began on 12/21/17.

SN: CS-17330AA1024 (PA) **No. U1442**

**\$260,000**

2019 GVM T380 Prowler, 781 hours, Cummins QSL9 380 hp turbo diesel engine, Funk DF250 powershift 11-speed auto. trans., Dromos fixed axles rated @ 34,000 lb., 4WS, 409 SS painted GVM Double Duty 11 ton spreader body, roll tarp, SmarTrax autosteer, Raven Viper 4+, RGL600 Light Bar, A/C, AM/FM/BT radio, air ride seat, 380/105R5 Firestone tires (50% remains).

SN: CS-193804WT1021 (MO) **No. U1457**

**\$145,000**

2019 International 7300 Spreader, 5000 miles, Cummins B6.7 250 HP engine, Allison trans., 4WD, 409 SS 8 ton GVM Double Duty spreader, Shur-Lok Roll Tarp, Viper 4+ with guidance software, RGL600 light bar, A/C, AM/FM radio with Weather Band, Front Axle, (2) 385/65R34 Goodyear tires, (2) rear 600/60-30.5 floater tires.

(PA) **No. U1444**

**\$45,000**

2003 International 4400 Spreader, DT466 210 hp diesel engine, Eaton 10-speed trans., air ride seat, 11 ft New Leader L2000G4 spreader, Ag Leader Insight controller, light bar, roll tarp, front 385/65R22 (30% remains), and rear 48x31.00-2tires (50% remains). Motor had a major overhaul 60,000 miles ago, new radiator, and clutch.

SN: 1HTMKAANX3H570480 (OH) **U1470**

SPREADERS



\$85,000

2012 John Deere 4940, 4093 hours, John Deere 9.0L diesel engine, hydrostatic trans., 304 SS New Leader L3020G4 spreader, JD Greenstar 2600 controller, AutoSteer, A/C, heat, AM/FM radio, air ride seat, fenders, tires (60% remains). New back end installed, 2020.
(NC)



\$5,000

2017 New Leader 7' Insert, 7 ft multi-product insert, fits in 13 ft spreader body, 304 SS. All electrical and hydraulic connections included.
SN: 502222 (Charleston, MO) **BROKERED**



\$55,000

2011 RBR Vector 300, 4300 hours, Cummins 8.3L diesel engine, Allison auto. 4-speed trans., AxleTech axles rated @ 29,000 lb, painted 409 SS 11-ton New Leader L4000G4 spreader body, Raven Viper Pro, Auto Steer, John Deere cab, 380/90R46 front BKT (60% remains) and 380/90R46 rear Michelin tires (35% remains).
(MO) **No. U1435**



\$135,000

2017 RBR Vector 300, 2958 hours, Cummins QSB 8.3 300 hp diesel engine, Allison 6-speed auto. trans., New Leader L4000G4 spreader body, Viper Pro, A/C, air ride seat, 380/90R46 tires (50% remains). Also includes (4) Firestone 650/65R38 floater tires.
SN: M1700598 (PA) **No. U1422**

TRACTORS



\$7,500

1979 Deutz-Fahr DX90 Tractor, Deutz 4.7L 5-cyl diesel 90 hp air-cooled engine, fully synchronized trans., 15 forward and 5 reverse gears, dry disc clutch, up to 25 mph, 4x2 2WD, 7720 lb rear lift capacity, independent rear PTO with wet disc, rear RPM 540/1000, 3-point hitch, standard cab with 2 seats, A/C, front 10.00-16 tires, rear 18.4x34 tires.
SN: 78180047 (PA) **U1468**

LOADERS



\$22,500

2015 Swinger NWC-1K-KU, 255 hours, 48 hp Cummins A2300 4-cyl diesel engine, 2-speed hydrostatic trans., 1 yd3 bucket, auxiliary hydraulics, glow plugs, 1500 lb lifting capacity.
SN: NW-2796-15 (OH)

TENDERS



\$8,500

2001 International 4900, 481,187 hours, International DT-466 diesel engine, Eaton manual trans., MP hydraulic transfer pump, Parker PTO, 1000, 500, 65 gal. poly tanks, (2)100 gal. SS pods.

SN: 1HT5DAAN51H402034 (Winchester, VA) **BROKERED**

MISCELLANEOUS



\$10,000

2010 Dalton Ag DLQHD35, 15 row side dress rig with 1200 gal. poly tank, 37.5 ft booms, 30 in. nozzle spacing, 3-sections, Y-drops, JD rate controller for 2630 screen. Raven rate controller and display still available. Coulters and shanks available for injecting nitrogen. SN: 11607 (Trappe, MD) **BROKERED**



\$5,000

2006 GVM Spray Rig Only, 400 gal. SS tank, 50 ft booms, poly boom lines with rubber hose, 3-section shutoff valve, single body nozzles, SS eductor. (NY) **BROKERED**



\$5,000

2010 4660 SpraCoupe Perkins Diesel Engine 1104D, 874 hours, 4 cylinder, 4.4L (269 in.³), 125 hp (93 kW) at 2200 rpm. Engine includes: alternator, starter injection pump, turbo charger, and primary fuel filter and housing. (PA)



\$5,000

AxleTech Front Axle, complete 99 in. front axle. SN:00054 (Landisburg, PA) **BROKERED**



\$3,000

AxleTech Rear Axle, complete 99 in. rear axle. SN: 00054 (Landisburg, PA) **BROKERED**



\$8,000

(4) Firestone Row Crop Tires and Rims, 380/90R46, white, with 1 in. offset. (PA)



\$4,125

(2) Goodyear Row Crop Tires, 380/90R46, white, with 1 in. offset. **Brand new!** (PA)



\$1,300

Goodyear Ultra Sprayer Tire, (1) new Goodyear Ultra Sprayer tire with 1 in. offset wheel. 380/90R46. (Sikeston, MO) **BROKERED**



Call for Price

(2) Rims 12x46 in., heavy bead gray, W46-03500P15. Brand new! (PA)



April 04, 2021

STOCK EQUIPMENT



Biglerville, PA
800-345-3546

Bellevue, OH/Peru, IN
800-848-8460

Sikeston, MO
573-475-9496



SPRAYERS



\$250,000

2014 GVM E370 Prowler, 393 demo hours, Cummins QSL9 370 hp diesel engine, 1800 gal. SS tank, 4 chemical induction tanks, 60/90 ft booms, dual, low, and high volume boom lines for suspension fertilizer, high volume Ace pump, Viper Pro, Phoenix 200 receiver, SmarTrax 3D, UltraGlide, 380/90R46 tires. Includes 5-year warranty, began May 15, 2017.

SN: CS-14114XI1031 (PA)



\$265,000

2015 GVM E325 Prowler, 4 demo hours, Cummins QSL9, 325 hp diesel engine, ZF WG210 powershift 6-speed trans., 114 in. axles, variable coil spring suspension, 1800 gal. SS tank, combo ready, A/C, AM/FM radio, air ride seat, chemical eductor, fenders, 380/90R46 Trelleborg tires.

SN: CS-15325XI1039 (PA)

SPREADERS



\$240,000

2015 GVM E325 Prowler, Cummins QSL 8.9L 325 hp diesel engine, ZF WG210 6-speed powershift trans., 114 in. axles, variable coil spring suspension, painted 409SS 11-ton Double Duty Fusion Ready spreader body, A/C, AM/FM radio, air ride seat, Raven Viper, Raven Phoenix 200 receiver, RGL 600 Light Bar, SmarTrax 3D auto steer, window tint, roll tarp, 380/90R46 Firestone tires.

SN: CS-15325XI1033 (PA)



\$365,000

2019 GVM T380 Prowler, Cummins QSL9 380 hp turbo diesel engine, Funk DF250 4x4 powershift 11-speed auto. trans., 114 in. Dromos fixed axles rated @ 36,000 lb., 2WS, reverse pitch fan, Raven Viper 4+ with RS-1 ISO steering receiver, 409 SS painted GVM Double Duty Air 2-compartment spreader body, 72 ft. 304SS break away booms, 27 in. spacings, Raven RCM ISO, metering system for micronutrient bin, rear camera, roll tarp, A/C, AM/FM/BT radio, air ride seat, electric roll tarp, front and rear fenders, 480/80R50 Alliance row crop tires. Warranty options available.

SN: CS-193802WT1041 (MO)



\$390,000

2019 GVM T380 Prowler, Cummins QSL9 380 hp turbo diesel engine, Funk DF250 4x4 powershift 11-speed auto. trans., 114 in. Dromos fixed axles rated @ 36,000 lb., 2WS, reverse pitch fan, Raven Viper 4+ with RS-1 ISO steering receiver, 409 SS painted GVM Double Duty Air 3-compartment spreader body, 72 ft. 304SS break away booms, 27 in. spacings, Raven multi-product variable rate software, foam marker, metering system for micronutrient bin, Recon SpreadSense, rear camera, A/C, AM/FM/BT radio, air ride seat, electric roll tarp, front and rear fenders, 380/105R50 Trelleborg row crop tires. Warranty options available.

SN: CS-193802WT1028 (MO)

SPREADERS



\$325,000

2020 GVM T325 Prowler, Cummins 6.7L Stage V 325 hp diesel engine, Funk DF250 4x4 powershift 11-speed auto. trans., 114 in. Dromos fixed axles rated @ 36,000 lb., 2WS, reverse pitch fan, 409 SS painted GVM Double Duty 11-ton spreader body, roll tarp, Raven Viper 4 with RS-1 ISO receiver, Modem and Service Unlock, A/C, AM/FM/BT radio, air ride seat, front fenders, 380/90R46 Trelleborg tires. Warranty options available.

SN: CS-203252WT1048 (GA)

TRACTORS



\$87,900

2020 Deutz-Fahr 5120G Tractor, FARMotion® 4-cylinder 120 hp engine, 60×60 trans., up to 25 mph, 4WD front axle with brakes, 23.7 gpm rear hydraulics, 3 rear remote valves with flow control, electronic rear hitch control, 10,700 lb rear lift capacity, linkage and PTO controls on rear fender, 3-point hitch, deluxe cab with a high-visibility roof, air ride seat, heat and A/C, sound system, front 380/70R28 R1 tires, rear 480/70R38 tires.

SN: ZKDEY202WOTD10088 (PA)



\$99,900

2020 Deutz-Fahr 6130TTV Tractor, FARMotion® 4-cylinder 130 hp engine, TTV continuously variable trans., up to 25 mph, 4WD front axle, 32 gpm closed center hydraulics, 4 rear remote valves with flow control, electronic rear hitch control, hydraulic trailer brakes, 11,000 lb rear lift capacity, linkage and PTO controls on rear fender, 3-point hitch, deluxe cab with a high-visibility roof, air ride seat, heat and A/C, sound system, adjustable wheel spacing, front 380/70R28 tires, rear 480/70R38 tires. Complete with Loader.

(MO)

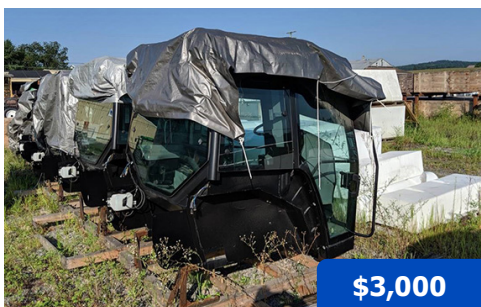


\$133,900

2020 Deutz-Fahr 6140TTV Tractor, FARMotion® 4-cylinder 120 hp engine, TTV continuously variable trans., up to 32 mph, 4WD front axle, 32 gpm closed center hydraulics, 4 rear remote valves with flow control, electronic rear hitch control, hydraulic trailer brakes, 15,400 lb rear lift capacity, linkage and PTO controls on rear fender, 3-point hitch, deluxe cab with a high-visibility roof, air ride seat, heat and A/C, sound system, front 480/65R28 R1 tires, rear 600/65R38 tires.

SN: WSXFH90200TD10040 (PA)

MISC.



\$3,000

Crenlo Genesis Cab, Brand new cabs made for 1996-2014 GVM Prowlers. Will fit all Rowcats, 1149/9909T and 9275 Prowlers. Can also fit New Holland Genesis series tractors with modifications.

(PA)

PART NUMBER	DESCRIPTION	QTY	PRICE
W38-13300	Rim 38 x 12 11/16 in. offset (front)	2	\$566
W-619060R	Rim W14 x 16.1	2	\$73
42-01160 (PA)	Assy., Dash Panel Electronic 2004	3	\$1,327